



Rising majestically above Mumbai's skyline is a shimmering tower that transcends every definition of luxury living. Offering a chosen few, the pleasure of waking up to the twitter of birds, dining on the freshest produce from their own garden, and watching the sun set over the Arabian Sea outside their window.

Lodha Parkside is a boutique residential development with an enviable location in South Mumbai's prestigious Golden Mile in Worli - located around a glorious 7-acre park on a hill: The Park. An advantage that endows it with all the prestige and cachet of living around a great urban park - much like the highly coveted residences around New York's Central Park, or London's Hyde Park.

Along with soothing views of The Park greens and the Race Course green, Lodha Parkside also affords spectacular views of the Eastern and Western Seaboard.

With a location few can rival, easy access to The Park's rich tapestry of experiences, and a world-class lifestyle at your disposal, each moment that you live at Lodha Parkside is a rare privilege.

**Beautifully designed residences.
Accessorized by stunning views.**



Starting 70 feet above ground level and rising to a dizzying height of over 850 feet, the elegant tower of Lodha Parkside soars into the sky, commanding panoramic views of the city and the Arabian Sea. Standing over 75 storeys high, Lodha Parkside will rank among the tallest towers in Mumbai, taking pride of place in Mumbai's skyline.

Sensitively designed by WOHA, the internationally-acclaimed, Singapore-based architecture firm, Lodha Parkside is in a league of its own. From its magnificent, air-conditioned entrance lobby, high-speed elevators silently whisk you up to your luxurious abode. Inside, every square inch is designed to build in functionality, and create aesthetic appeal at every turn. Full-length corner windows and overhangs ensure that every room in every residence feels like a shaded, private retreat. While bringing in plenty of air and natural light, and framing 70 mm views.



- Tower over 75 storeys high, 2 wings
- Personal suites, 2 bedroom residences, 3 bedroom residences
- Designed by WOHA, Singapore, the world's foremost architects in green high-rises
- Breath-taking vistas of the city - the Eastern Seaboard, the Arabian Sea, and the Mahalaxmi Racecourse
- Imposing double-height, air-conditioned entrance lobby
- 5 hi-speed elevators by Otis/Schindler/Mitsubishi*
- Designer floor lobbies



Enjoy panoramic views of the Mahalaxmi Racecourse

**A residence
so rare, it's graced
only by the
world's finest.**



Showcasing the most thoughtful design, the most stylish appointments and the finest brands from across the globe, Lodha Parkside provides an unparalleled experience in luxury living. Every residence is open on three sides, assuring you of an airy, sunlit and blissfully private haven. Your spacious residence is meticulously planned to optimize space, as well as provide for all your needs, from a separate entrance foyer to a private puja room as well as a separate store room and utility area. And premium European fittings add a stylish touch, turning even a routine shower into an experience of indulgence. With the finest imported marble at your feet, every convenience at your fingertips and your floor-to-ceiling windows framing the most breath-taking views, owning a residence at Lodha Parkside is truly, a rare privilege.





- Spacious residences with 3 sides open
- Designed to ensure maximum privacy, cross ventilation and light
- Imported marble flooring in the living and dining areas, all bedrooms, bathrooms, puja and passage areas
- Fully air-conditioned homes*
- Luxury Swiss & German Laufen/Duravit sanitary ware, Grohe/Gessi/Isenberg CP fittings and designer tiling in all bathrooms#
- Separate entry foyer for each residence
- Every square inch designed, to maximize functionality with separate puja room^, separate store room^ and separate utility area.
- Imported modular kitchen fitted with gas detector
- Kitchen, utility area, store room and service areas – all finished in premium tiling

*excluding kitchen, bathrooms and service areas
^3 BHK residences only



You don't just step into a luxurious residence. You step into the future.

Contemporary luxury living demands fully-automated homes, with the controls to every appliance at your fingertips and easy access to technology.

At Lodha Parkside, you'll find your residence is wi-fi enabled from the moment you step in. While advanced fibre optic connectivity assures you of advanced IPTV and digital gaming on command.



- Wi-fi enabled homes
- Advanced Fibre Optic Connectivity with advanced IPTV and digital gaming



Happiness and peace of mind come guaranteed. With a 7-tier security system.

A world-class security system, deploying the finest technology and personnel, surrounds Lodha Parkside as well as The Park, making it the safest haven for you and your family. So wherever you are in its 7-acre expanse, you are safe and secure.



- Advanced 7-tier security system:
 - Swipe card access to lobby and elevators
 - Video door phone
 - CCTV monitoring of key common areas
 - RFID identification of vehicles
 - Pre-entry registration and visitor tracking
 - Gas detector in kitchen
 - Emergency alarm in each residence
- State-of-the-art firefighting systems

**Concierge services,
facilities management,
valet parking.
Because there's no
such thing as wanting
too much.**



At Lodha Parkside, you have every convenience in place to ensure your household runs on oiled wheels. An attentive valet is at hand the moment you drive in, to park your precious Audi. A world-class concierge service will meet every need, from the routine to the whimsical, efficiently and meticulously. And a professional facilities management team keeps every nook and corner of Lodha Parkside in immaculate condition. So you can enjoy the good life without a care in the world – a rare privilege indeed.

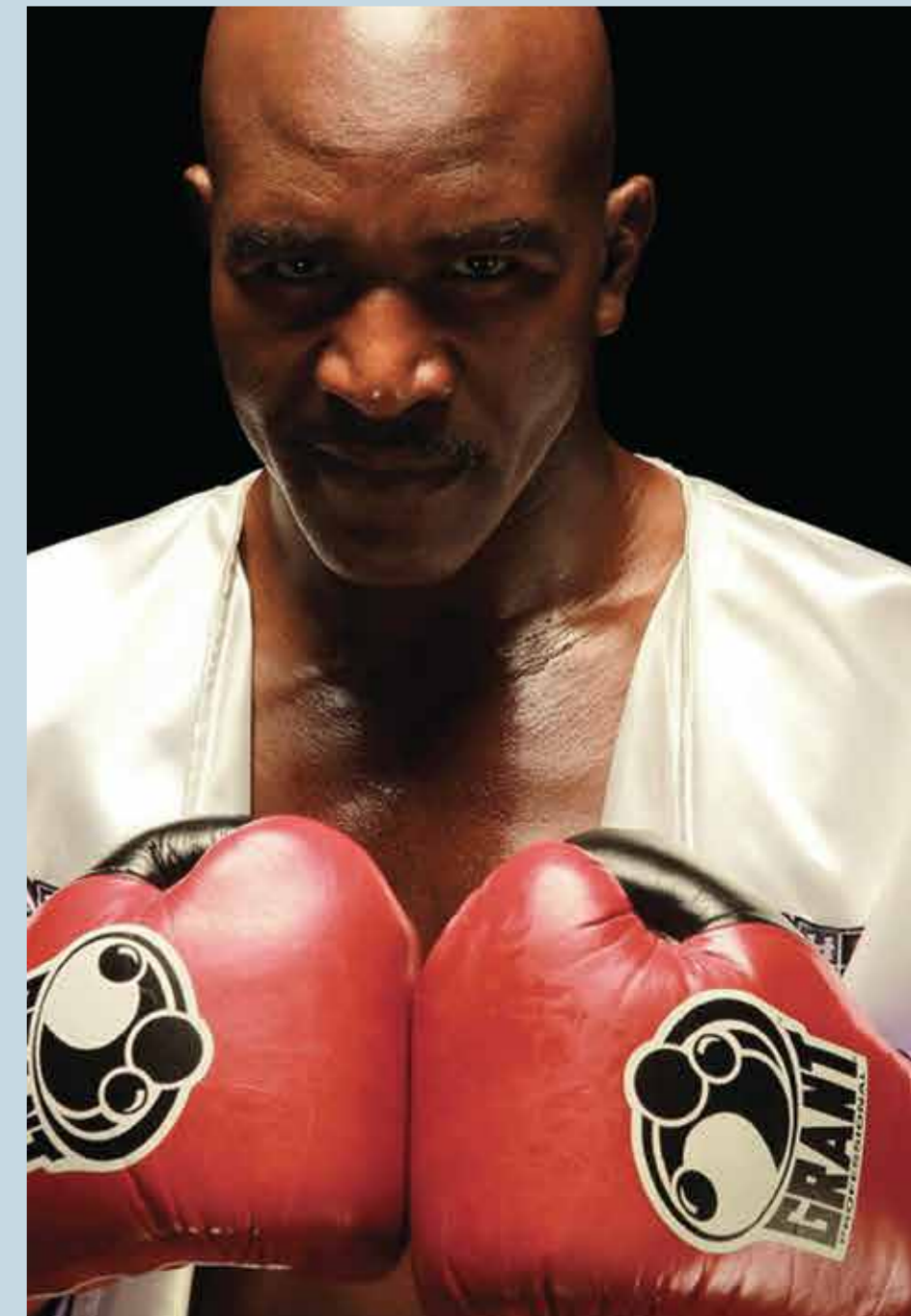
- Concierge services by Club Concierge
- Maintenance staff around the clock
- Valet parking
- Separate service elevators with separate service entry to building



Experience a world of leisure, well-being and privilege. Step into a 50,000 sq. ft. crystal.



Inspired by a magnificent crystal, the clubhouse at The Park with its diamond-like facets, is a rare and glittering example of what happens when luxury meets grand architecture meets grand vision. Its jeweled doors open into an expansive world of privilege, extending over 50,000 square feet. World-class fitness facilities, gourmet restaurants, elegant hospitality venues, a private theatre, India's first ever Evander Holyfield Gym & Boxing Ring, and a fitness regimen created by Ramona Braganza, personal trainer to Hollywood celebrities – every possible comfort is at your disposal, within its crystalline walls.



Of all the privileges of living at Lodha Parkside, the rarest is living around a 7-acre private park.



Historically, the world's most sought-after and exclusive residences have always been located around great urban parks. Central Park, New York and Hyde Park, London, are some of the most desirable neighbourhoods to live in, pulsating with vibrant life and activity.

The Park now brings the buzz and lifestyle of these landmark urban park neighbourhoods to Mumbai.

Set amidst 1000 trees and abundant nature, this private park provides the perfect escape from the city. With a variety of moods and expressions, and a vast range of scales from a wide maidan to intimate spaces, this serene haven is imbued with experiences that will enrich every moment of your life.



The Park is a tapestry of experiences so rich, it would take a lifetime to enjoy all of them. Morning walks by a lotus water garden, weekend picnics in a butterfly garden, fruit and vegetables from a private fruit orchard and organic garden - experiences you could never have envisioned, are now yours to enjoy in the heart of the city.

Your children will revel in the delights of a sprawling playground, a sand-pit, a skating rink and an irresistibly tempting tree house, while you have a magnificent clubhouse with a world-class spa and gym, a choice of swimming pools, elegant party venues, indoor and outdoor sports courts, a private theatre and a well-stocked library - all at your disposal within the park's boundaries.

One park. Infinite experiences.



- 7-acre private park – the size of 6 football fields put together
 - Multiple themed gardens
- Organic herb, spice and vegetable gardens
 - Lotus water garden and lily bay
 - Jacuzzi by the waterfall
- Picnic spots, sit-outs, garden pavilions
 - Green expanses and lawns



SPORTS & FITNESS

- 7 swimming pools: Full-length lap pool, covered temperature-controlled pool for ladies and children, kids' pool, toddlers' pool, family pool spread over 70 metres, Turkish 'Hamam' pool, terraced spa pool by the waterfall
- India's first Evander Holyfield gym, providing a world-class fitness & training system to bring out the champion in you
- 321 training - a fitness regimen created by Ramona Braganza, personal trainer to Hollywood celebrities
- Courts for every sport - tennis, basketball, volleyball
- Air-conditioned indoor sports courts - tennis and badminton
- Cricket Maidan with full-size cricket pitch
- 200 metre athletics track
- Sports ground with football facilities and provisions for other sports
- 1 km+ jogging & walking track
- 9-hole putting green



LEISURE & RECREATION

- 50,000 sq.ft. clubhouse
- World-class luxury spa
- Indoor games room for table tennis, snooker, carrom and cards
- Gourmet restaurants and cafes
- Banqueting facilities - 2 party halls and party lawns
- Luxury guest rooms for family & friends
- Outdoor cinema
- Private theatre
- Amphitheatre
- Serene Ganesha temple
- Well-stocked library
- Luxury retail plaza with ample shopping and designer brands

COMFORT & CONVENIENCE

- Convenience store provision
- ATM provision
- Fully-equipped business centre with 2 meeting rooms
- 24x7 medical facility




FUN FOR KIDS

- Playzone for kids 2 to 14 years:
- KidzFun, an indoor play area / crèche for kids 2-8 years
- Entertainment zone with video games, board games and more for kids 8-14 years.
- Kids' pool
- Extensive library with over 4000 books
- Activity Room - Dance classes by Sandip Soparkar and Music by Furtados School of Music
- World-class indoor kids' playground
- Outdoor kids' play area with extensive play equipment
- Pet garden & walk
- Tree house
- Picnic trails
- Rock climbing
- Outdoor Chess



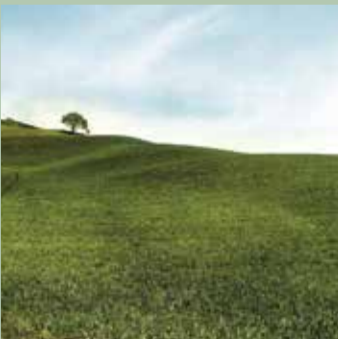
HEALTH AND WELLBEING

- Organic vegetable garden
- Organic herb garden serving herbal infusions
- Fruit orchard
- Organic café serving the freshest teas
- World-class health club with champions' gym
- Juice bar



Blessed by Nature's bounty. And designed to stay so forever.

Endowed with its own eco-system,
Lodha Parkside has been designed to enrich life
in a responsible manner, and safeguard
its natural splendour for all time.
Incorporating every system and process to
protect and preserve the environment.



Over 85% of the development is open space • Over 1000 trees to improve air quality and provide green cover
Solar power for common areas, reducing maintenance costs and adverse environmental impact • Green walls to reduce
noise and pollution • Waste-water recycling with advanced MBR technology • Advanced rain-water harvesting system